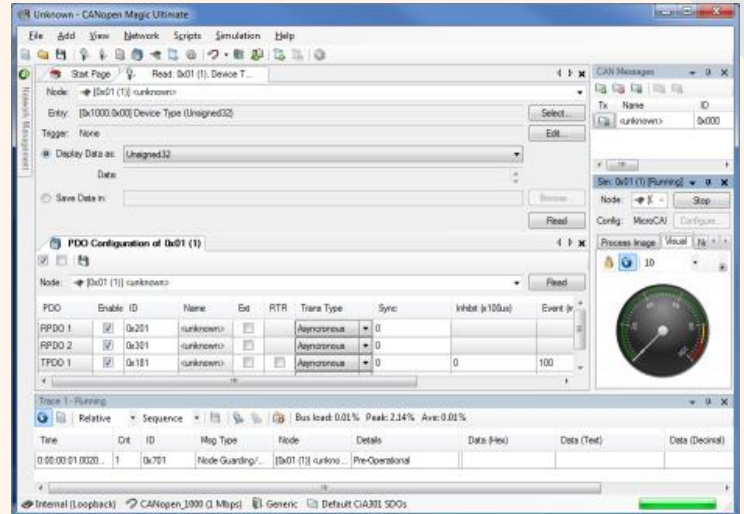


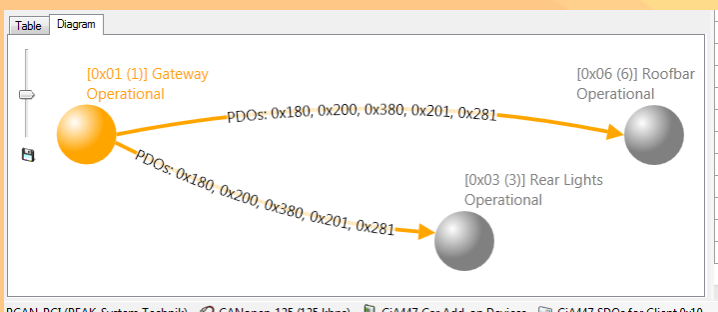
Professional CANopen configurator, monitor, analyzer, test tool and simulator available in three versions and as DLL for the creation of own service tools

CANopen Magic is a versatile software tool to monitor, analyze, trace, configure, simulate and test CANopen and CANopen FD networks and devices. It contains functions for the entire lifetime of a CANopen network: from development and test to system integration and performance analysis. Use sophisticated trace filtering and node access to monitor, analyze and test all aspects of your network. Simulate nodes that are still under development.




Features (Version depending):

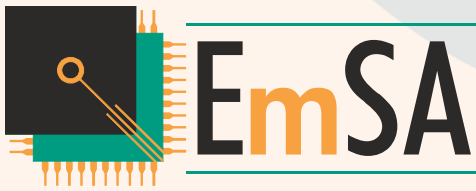
- Read and write to nodes using SDOs
- SDO expedited, segmented and block modes
- Transmit CAN messages
- Display network overview
- Network management (NMT)
- Trace windows
- Display and configure PDOs
- Read/write device configuration files (DCF)
- Custom SDO channels
- Custom vendor names
- Custom device types
- Custom error codes
- Custom abort codes
- Can describe nodes (name, EDS)
- Trace filter scripts
- CANopen manager configuration
- Layer Setting Services (LSS) support
- Display process data meters, graphs, LEDs, etc.
- Replay log files
- Trace window filtering
- Trace window continuous (long term) recording
- CiA 447 Car Add-on Devices support
- Multiple node setup windows
- Multiple PDO configuration windows
- Multiple node read windows
- Multiple node write windows
- Node Object Dictionary Overview and Access
- Python Script API, Editors and Interpreters
- Simulated nodes
- Automatic object dictionary simulation from an EDS or DCF
- Automatic generation of network diagrams
- Trace analysis graphs and charts
- Supports real CAN interfaces
- PEAK CAN interface support
- Kvaser CAN interface support
- VSCOM NET-CAN 110 interface support
- Command line interface



Order codes

- ES-SFT-COMS: CANopen Magic Standard
- ES-SFT-COMP: CANopen Magic Professional
- ES-SFT-COMU: CANopen Magic Ultimate
- ES-SFT-PCDEV: CANopen Magic DLL

Version comparison 



CANopen Magic Versions

CANopen Magic is available in the versions Standard, Professional and Ultimate. The optional DLL version allows the implementation of custom service tools. All versions support both CANopen and CANopen FD.

Features	Standard	Professional	Ultimate
Read and write to nodes using SDOs	✓	✓	✓
SDO expedited, segmented and block modes	✓	✓	✓
Transmit CAN message lists	✓	✓	✓
Display network overview	✓	✓	✓
Network management (NMT)	✓	✓	✓
Trace windows	✓ (max 1)	✓ (max 4)	✓ (max 4)
Read/write device configuration files (DCF)	-	✓	✓
Custom SDO channels	-	✓	✓
Custom vendor names, device types	-	✓	✓
Custom error codes, abort codes	-	✓	✓
Custom node description (name, EDS)	-	✓	✓
Trace filter scripts	-	✓	✓
CANopen manager configuration	-	✓	✓
Layer Setting Services (LSS) support	-	✓	✓
Display process data meters, graphs, LEDs, etc.	-	✓	✓
Replay log files	-	✓	✓
Trace window filtering	-	✓	✓
Trace window continuous (long term) recording	-	✓	✓
CiA 447 Car Add-on Devices support	-	✓	✓
Multiple node setup windows	-	✓ (max 10)	✓ (max 10)
Multiple PDO configuration wizard windows	-	✓ (max 10)	✓ (max 10)
Multiple node read and write windows	-	✓ (max 10)	✓ (max 10)
Node Object Dictionary Overview and Access	-	✓ (max 1)	✓ (max 10)
Python Script API, Editors and Interpreters	-	-	✓ (max 10)
Simulated nodes	-	-	✓ (max 127)
Automatic object dictionary simulation from an EDS or DCF	-	-	✓
Automatic generation of network diagrams	-	-	✓
Trace analysis graphs and charts	-	-	✓
CAN Interfaces supported: PEAK, Kvaser, VSCOM NET-CAN 110	✓	✓	✓
Command line interface	✓	✓	✓