

The CANopen Diag unit provides all functions of the MiniDiag plus hardware measurements like a CAN oscilloscope and the optional CANopen Test Machine

The CANopen Diag devices are compact, hand-held diagnostic and test devices for entire CANopen networks as well as for single Devices Under Test (DUT). It operates on batteries (4 x AA) or external power supply.



The diagnostic functions includes physical layer measurements:

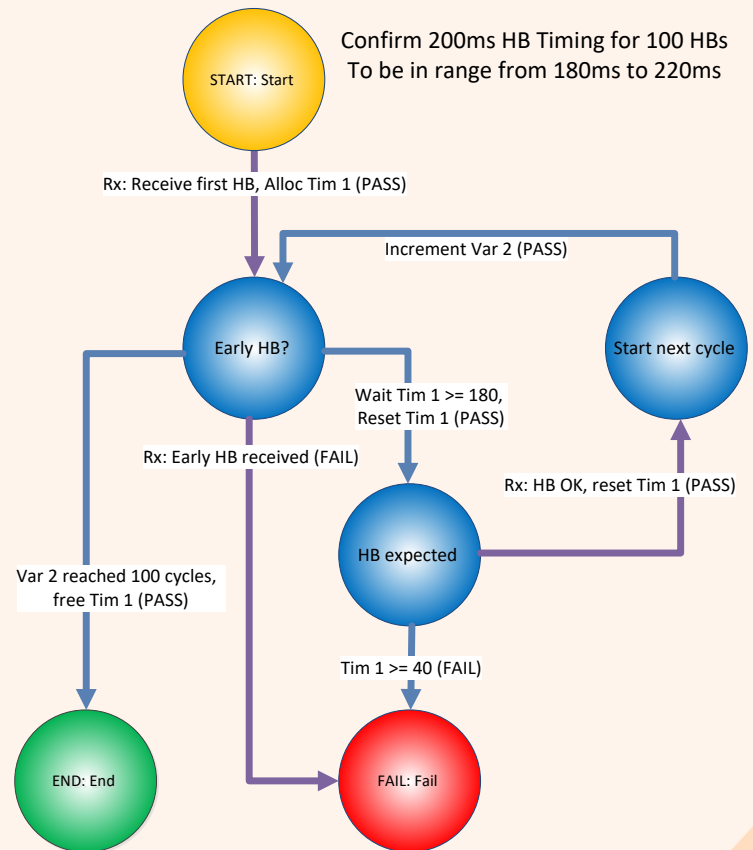
Physical Layer and Generic CAN

- Termination resistor measurement
- Voltage at pins measurements
- Bus load measurements and statistics
- CAN oscilloscope



CANopen Test Machine

The tests are based on a state machine with transition rules triggered by the transmission or reception of a CAN message and conditions that include timers and counters. Each individual transition rule can contribute towards a test result by specifying if this transition should add to the fail counter. The test graphs can be drawn with Microsoft Visio®, provided macros auto-generate the test script from the graph.



Order codes

- ES-DIAG-BAS: CANopen Diag
- ES-DIAG-COP: CANopen Diag with test machine
- ES-DIAG-443: CiA 443 add-on for CANopen Diag
- ES-DIAG-447: CiA 447 add-on for CANopen Diag